

# 5" Housing Systems

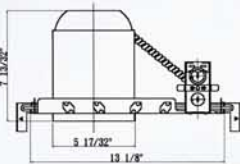


**DN5N**

**DESCRIPTION:** LINE VOLTAGE NEW CONSTRUCTION NON IC HOUSING

**SOCKET:** E27

**LAMP:** PAR30/R30 75W



Flexible, reliable and easy to install. The DN5N is the best choice for residential and commercial applications.

- For non-ic insulation ceilings or where, insulating can be kept 3" from housing (U.S. only)

**Housing Features**

- Integral thermal protector guards against misuse of insulation materials and improper lamping.
- Adjustable socket bracket allow the use of different lamp types and size as well as proper and consistent lamp positioning.
- Junction Box is listed for through branch circuit wiring and has seven 1/2" knockouts and four Romex knockouts with true pryout slots.
- Plaster frame includes locking screw for hanger bars and cutouts for crimping hanger bars in position.
- New housing adjustment screws can be tightened with flat blade screwdriver, Philips screwdriver, Wrench or nut driver.

- Pre-installed, captive bar hangers allow housing to be positioned at any point within a 24" joist span. Score Lines provided for easy field shortening for 12" joists. Unique arrowhead design provides "Nailless" installation. Bar hangers can be repositioned 90° without tools. Hangers fit onto T-Bar spline for quick alignment and can be permanently secured with optional T-Bar clip.

**Installation Features**

- 7 1/2" Height allows use in 2"X8" joist construction.

**Listings**

- UL Damp Location
- UL Feed Through
- ETL Certified
- CETL Certified
- CUL Feed Through

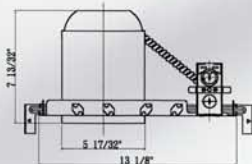


**DN5ICAT**

**DESCRIPTION:** LINE VOLTAGE NEW CONSTRUCTION IC AIR TIGHT HOUSING

**SOCKET:** E27

**LAMP:** PAR30/R30 75W



DN5ICAT housing is gasketed to prevent air flow from heated or air conditioned spaces. DN5ICAT meets State of Washington Restricted Air Flow requirements.

**Housing Features**

- Integral thermal protector Guards against misuse of insulation materials and improper lamping.
- Adjustable socket bracket allows the use of different lamp types and size as well as proper and consistent lamp positioning.
- Junction box is listed for through branch circuit wiring and has seven 1/2" knockouts with true pryout slots.
- Four Romex pryouts with Integral strain relief simplify Romex installation.

**Installation Features**

- 7 1/2" Height allows use in 2"X8" joist construction.
- Unit clips through 6 1/4" Ceiling opening.
- Four remodel clips secure housing and accommodate various ceiling thickness.

**Listings**

- UL Damp Location
- UL Feed Through
- ETL Certified
- CETL Certified
- CUL Feed Through

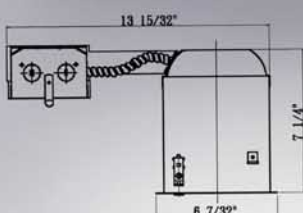


**DN5R**

**DESCRIPTION:** LINE VOLTAGE REMODEL NON IC HOUSING

**SOCKET:** E27

**LAMP:** PAR30/R30 75W



Designed for quick and easy installation in new or existing ceilings. The ND5R accepts a wide variety of trim for use in remodeling.

- For non-insulated ceilings or where insulation can be kept 3" from housing (U.S. only)

# 5" Housing Systems



## DNT50G

### Gold Open Trim

**Lamps:** PAR30/R30, 75W,  
E26/27 Base

**OD:**6-1/4"



## DNT50W

### White Open Trim

**Lamps:** PAR30/R30, 75W,  
E26/27 Base

**OD:**6-1/4"



## DNT51W

### White Metal Baffle;

**Lamps:** PAR30/R30, 75W,  
E26/27 Base

**OD:**6-1/4"



## DNT51B

### Black Metal Baffle;

**Lamps:** PAR30/R30, 75W,  
E26/27 Base

**OD:**6-1/4"



## DNT52C

### Chrome Reflector;

**Lamps:** PAR30/R30, 75W,  
E26/27 Base

**OD:**6-1/4"



## DNT52G

### Gold Reflector;

**Lamps:** PAR30/R30, 75W,  
E26/27 Base

**OD:**6-1/4"



## DNT55W

### White Reflector and Ring

**Lamps:** PAR30/R30, 75W,  
E26/27 Base

**OD:**6-1/4"



## DNT55SN

### Satin Nickel Reflector and Ring

**Lamps:** PAR30/R30, 75W,  
E26/27 Base

**OD:**6-1/4"

# 5" Housing Systems



## DNT56W

**White Gimble Ring;**

**Lamps:** PAR30/R30, 75W,  
E26/27 Base

**OD:**6-1/4"



## DNT56G

**Gold Gimble Ring**

**Lamps:** PAR30/R30, 75W,  
E26/27 Base

**OD:**6-1/4"



## DNT56SN

**Satin Nickel Gimble Ring**

**Lamps:** PAR30/R30, 75W,  
E26/27 Base

**OD:**6-1/4"

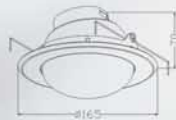


## DNT57VW

**Shower White Drop Oval**

**Lamps:** PAR30/R30, 75W,  
E26/27 Base

**OD:**6-1/4"



## DNT57VSN

**Shower Satin Nickel Drop Oval**

**Lamps:** PAR30/R30, 75W,  
E26/27 Base

**OD:**6-1/4"

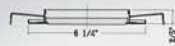


## DNT57VG

**Shower Gold Drop Oval**

**Lamps:** PAR30/R30, 75W,  
E26/27 Base

**OD:**6-1/4"



## DNT57A

**Albalite Shower Trim;**

**Lamps:** PAR30/R30, 75W,  
E26/27 Base

**OD:**6-1/4"

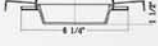


## DNT57F

**Fresnel Shower Trim;**

**Lamps:** PAR30/R30, 75W,  
E26/27 Base

**OD:**6-1/4"



## DNT57D

**Drop Opal Shower Trim;**

**Lamps:** PAR30/R30, 75W,  
E26/27 Base

**OD:**6-1/4"



## DNT58W

**White Eyeball;**

**Lamps:** PAR30/R30, 75W,  
E26/27 Base

**OD:**6-1/4"



## DNT59W

**White Wall Wash**

**Lamps:** PAR30/R30, 75W,  
E26/27 Base

**OD:**6-1/4"